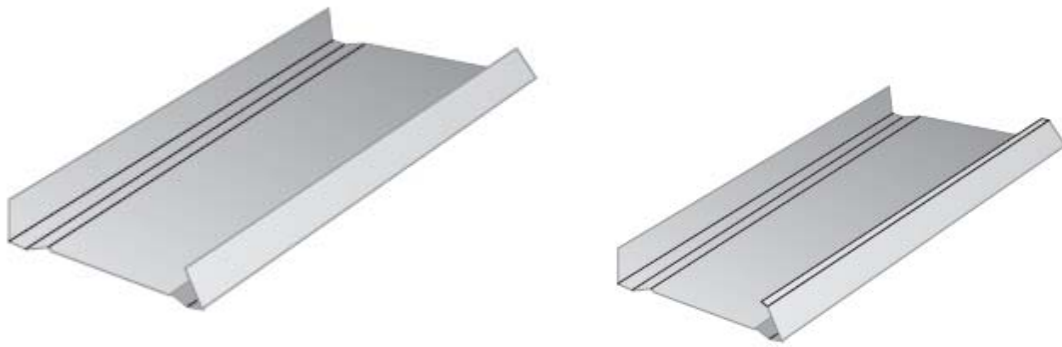




The Innovators of Quality Framing and Lath Systems

Non Structural Framing (Drywall) Members Specification



The 25 Ga. (18 mil) x1¼” sections have flanges hemmed to the outside for better friction.

Member Depth at inside The flanges plus 5/32”	Flange width	Gauge (Mils)
1 5/8”, 2 ½”, 3 ½”, 3 5/8”, 4”, and 6”	1”, 1 ¼ & 1 1/2”	25, 22, and 20 (18, 27, and 30 or 33)

CEMCO Non-structural framing “Drywall” members are used as non-load bearing wall track and ceiling joist members. The members are fabricated from hot-dipped galvanized steel complying with ASTM A653, with a minimum G40 coating. The framing members meet ASTM C645 and are in compliance with Chapter 22 of the 97 UBC, 2001 CBC, 2001 IBC. Recognized under ICC-ES (ICBO ES) ER#3403P and ER #4943P, fire and sound rated assemblies listed under the code and Fire Resistance Design Manual.

CALIFORNIA EXPANDED METAL LATH PRODUCTS CO.

Corporate Office:

263 N. Covina Lane,
City of Industry, CA 91744
Phone (800) 775-2362
Fax (626) 330-7598

1001-A Pittsburg Antioch Hwy,
Pittsburg, CA 94565
Phone (925) 473-9340
Fax (925) 473-9341

490 Osage Street,
Denver, CO 80204
Phone (303) 572-3626
Fax (303) 572-3627

www.cemcosteel.com